

183 Express Lanes Access and Pricing

What are the 183 Express Lanes?

The 183 Express Lanes bring you an express connection between downtown Austin and Cedar Park. Express lanes are special tolled lanes with limited entrance and exit points that are separated from the non-tolled general purpose lanes and are designed to keep traffic flowing.

How do I access the Express Lanes?

If you're on the US 183 general-purpose lanes, you'll still have the same access to on and off ramps from these lanes, but now you have new entrance and exit options if you're traveling on the 183 Express Lanes:

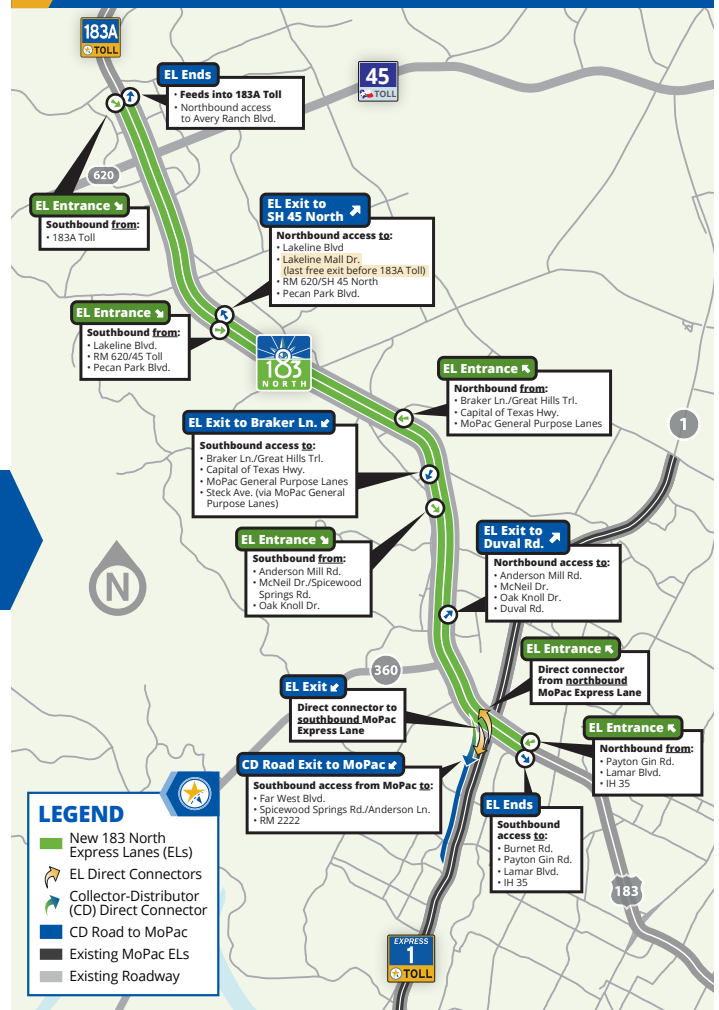
- There are **three northbound entrances**, including a direct connector from the MoPac Express Lane.
- There are **three southbound entrances**, including a seamless entrance from 183A Toll in Cedar Park.

See map for additional details about access to the 183 Express Lanes.

What is Variable Toll Pricing?

Variable toll pricing helps manage the number of cars in the express lanes at any given time. When traffic is heavy in the express lanes, demand is high, and toll rates increase. When demand is low, toll rates decrease. The goal is to prevent congestion by managing the number of vehicles using the lanes to provide a reliable trip for transit, emergency services vehicles and drivers — when they really need it.

183 Express Lanes Entrances and Exits



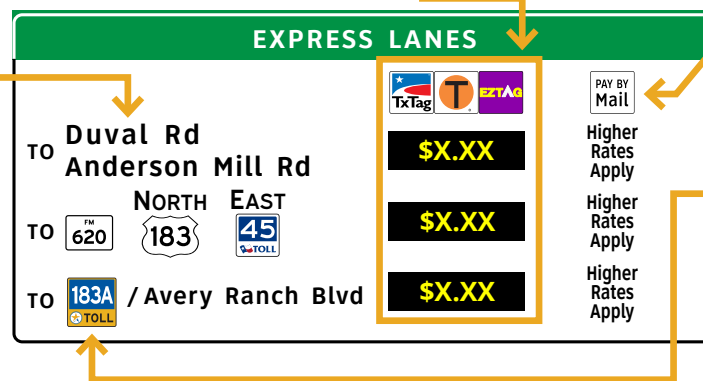
How Do I Read the Toll Signs?

Changeable electronic signs display the current rates in real time, so you'll know the price before you decide whether to enter the lanes. Once you are in the lanes, **the price you see is the price you'll pay.**

DESTINATION EXIT:

The project is divided into segments, each with corresponding toll prices.

These pricing signs will be placed about a half a mile before the express lane entrance so drivers have ample time to decide whether to take the express lanes or the non-tolled general purpose lanes.



PAY BY MAIL OPTION:

Drivers who do not have an electronic tag can pay by mail. Pay By Mail toll rates are higher than electronic tag rates and include a \$1 processing fee per invoice.

183A TOLL CONNECTION:

The northbound 183 Express Lanes connect directly to 183A Toll in Cedar Park. The price displayed includes both the variable priced 183 Express Lanes segment and the set price for the first tolling point on 183A Toll cost combined.